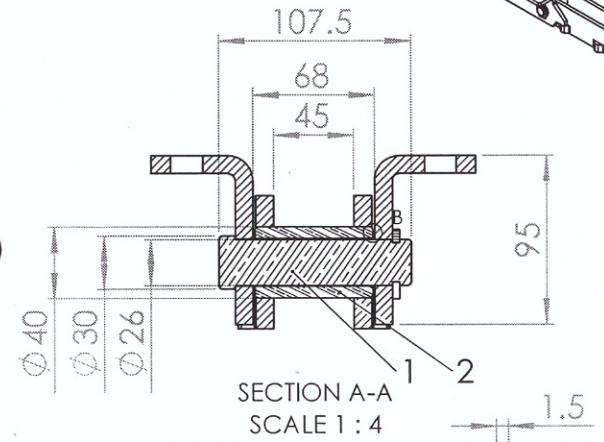
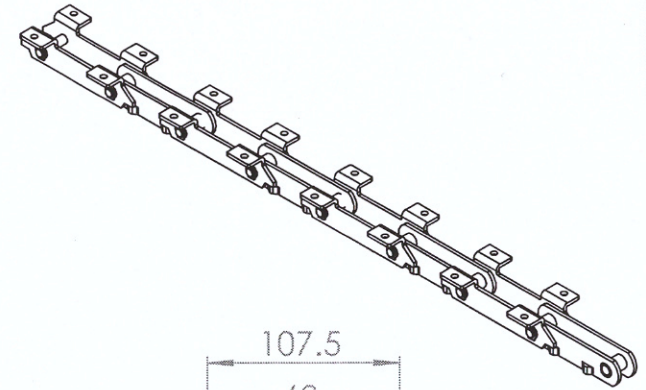


DETAIL C  
SCALE 2 : 20



SECTION A-A  
SCALE 1 : 4



DETAIL B  
SCALE 1 : 1

**NOTE :**  
 1 - Pin to be hardness 50-56 HRC on surface in depth of 2.0 - 3.0 mm  
 2 - Bush to be hardness 52-58 HRC on surface in depth of 1.00 - 1.5 mm  
 3 - link to be hardness 29 -34 HRC on surface in depth of 0.75 - 1.5 mm

UNLESS OTHERWISE SPECIFIED:  
 DIMENSIONS ARE IN MILLIMETERS

SURFACE FINISH:  
 TOLERANCES:  
 LINEAR: DIN ISO 2768-1 M  
 ANGULAR: DIN ISO 2768-1 M

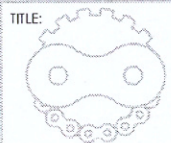
DEBURR AND  
 BREAK SHARP  
 EDGES

کارت سیمان کرمان  
 آرشه دفتر فنی  
 DO NOT SCALE DRAWING  
 REVISION

Table 1

Part No	Description	Material	Hardness (HRC)
1	Pin	VCN150 (DIN 1.6582)	50-56
2	Bush	18CrNi8 (DIN 1.5920) or 15CrNi6 (DIN 1.5919) or 18CrNiMo7-6 (DIN 1.6587)	52-58
3	lock inner link	42CrMo4 (DIN 1.7225)	29-34
4	Holder outer link	42CrMo4 (DIN 1.7225)	29-34
5	Holder Lock Outer Link	42CrMo4 (DIN 1.7225)	29-34
6	key	ST52 (DIN 1.0570)	-

Customer: Kerman Cement Co.



**ZANJIRSAZAN**  
 NEGIN SANAT  
 Design & Manufacturing Of Material Handling System

NAME	SIGNATURE	DATE
DRAWN A.R.Behzad		
CHK'D H.R.Sadeghi		
APPV'D F.Sadeghi		
MFG		
Q.A		

MATERIAL:  
 According To Table 1

WEIGHT:

DWG NO. Pan Conveyor Chain BAU 4540.2 Pitch 250 mm  
 SCALE:1:1  
 SHEET 1 OF 1

A4